

Integrating Modern Infrastructure with Historic Aesthetics: The Peninsula WRF Story

December 2025 | CSEAO Winter Conference

BURGESS & NIPLÉ



Kimley»Horn

Presenters

BURGESS & NIPLE



Mary Ann Driscoll, PE

Project Manager
Burgess & Niple



Jacob Morrison, PE

Environmental Engineer II
Summit County DSSS



Dave McCallops, PE

Project Manager
Kimley-Horn

Agenda

- Project Overview & Goals
- Community Support & Resistance
- Stakeholders & Collaboration
- Environmental & Regulatory Coordination
- Treatment & Collection System Design
- Funding & Communication
- Lessons Learned

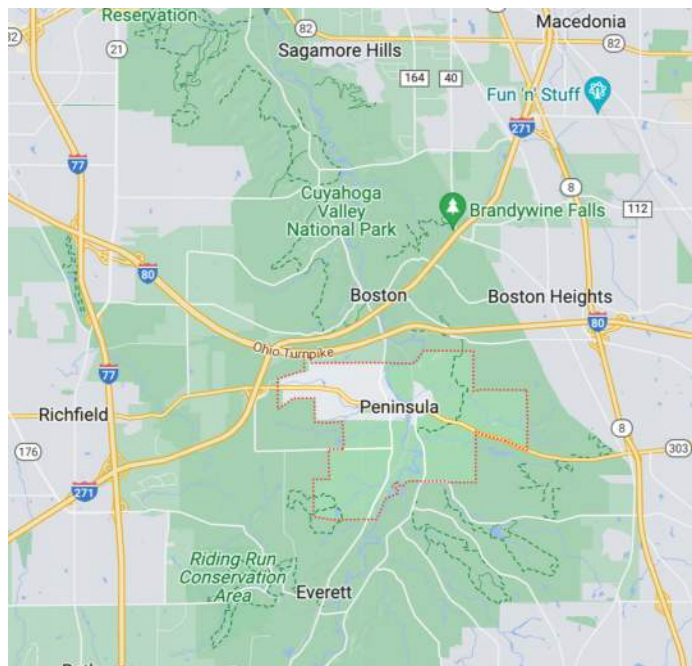


Village of Peninsula Overview

BURGESS & NIPLE



- Location within Cuyahoga Valley National Park
- Historical and environmental significance



The Problem – Failing Septic System

BURGESS & NIPLE



- History of septic system failures
- Environmental and public health impacts
- Longstanding community concerns



Mike DeWine, Governor
Jon Husted, Lt. Governor
Laurie A. Stevenson, Director

June 6, 2022,

TRANSMITTED ELECTRONICALLY

Mayor Schneider & Council
Village of Peninsula
1582 Main Street
Peninsula, OH 44264

Re: **Village of Peninsula
General Correspondence
NPDES
Summit County
8DU00438**

Subject: Peninsula Wastewater Treatment Options

Dear Mayor Schneider & Council:

This letter is in response to the on-going discussions between Ohio EPA, Division of Surface Water and the Village of Peninsula (Village) regarding wastewater issues that exist within the Village.

Ohio EPA has received the Sanitary Sewer Feasibility Study Update dated April 15, 2022, from the Summit County Department of Sanitary Sewer Services (DSSS). The Sanitary Sewer Feasibility Study Update was prepared by the Environmental Design Group. The recommended alternative of a conventional extended aeration sewage treatment plant with a collection system to serve the areas of the Village with elevated levels of E. Coli appears to be a viable solution to abate the unsanitary conditions that exist in the Village.

Community Resistance & Concerns

BURGESS & NIPLE



- Fears of unwanted growth
- Desire to preserve historic character
- Balancing infrastructure needs with preservation



Project Goals

- Eliminate pollution sources entering the Cuyahoga River
- Provide sustainable wastewater treatment (WRF capacity: 130,000 GPD)
- Preserve the Village's historic aesthetic

BURGESS & NIPLE



FRONT ELEVATION
SCALE: 1/4" = 1'-0"



COMMUNITY BUILDING

Stakeholder Landscape

Overview of key stakeholders:

- Summit County
- Village of Peninsula
- National Park Service
- Ohio EPA, ODNR, ODOT, USFW, SHPO

VILLAGE OF PENINSULA
1582 Main Street, Peninsula OH 44264



BURGESS & NIPLE



**Department of
Transportation**



**Department of
Natural Resources**



Building Consensus

- Strategies used to align diverse interests
- Overcoming resistance to change
- Role of transparency and trust-building



Environmental Investigations

BURGESS & NIPLE



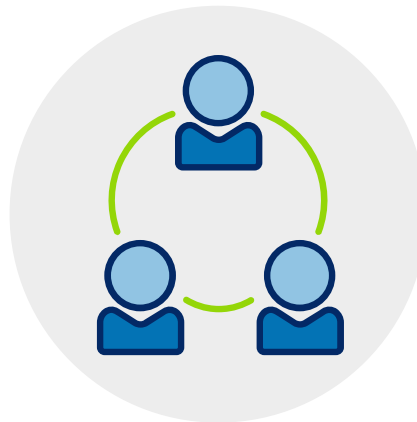
- Soil and environmental studies
- Goals: protect the Cuyahoga River and preserve natural beauty
- Agencies involved in environmental review



Regulatory Coordination



- Permitting challenges and timelines
- Agencies involved: Ohio EPA, ODNR, SHPO, National Park Service
- Navigating overlapping jurisdictions
- Synchronizing requirements across agencies

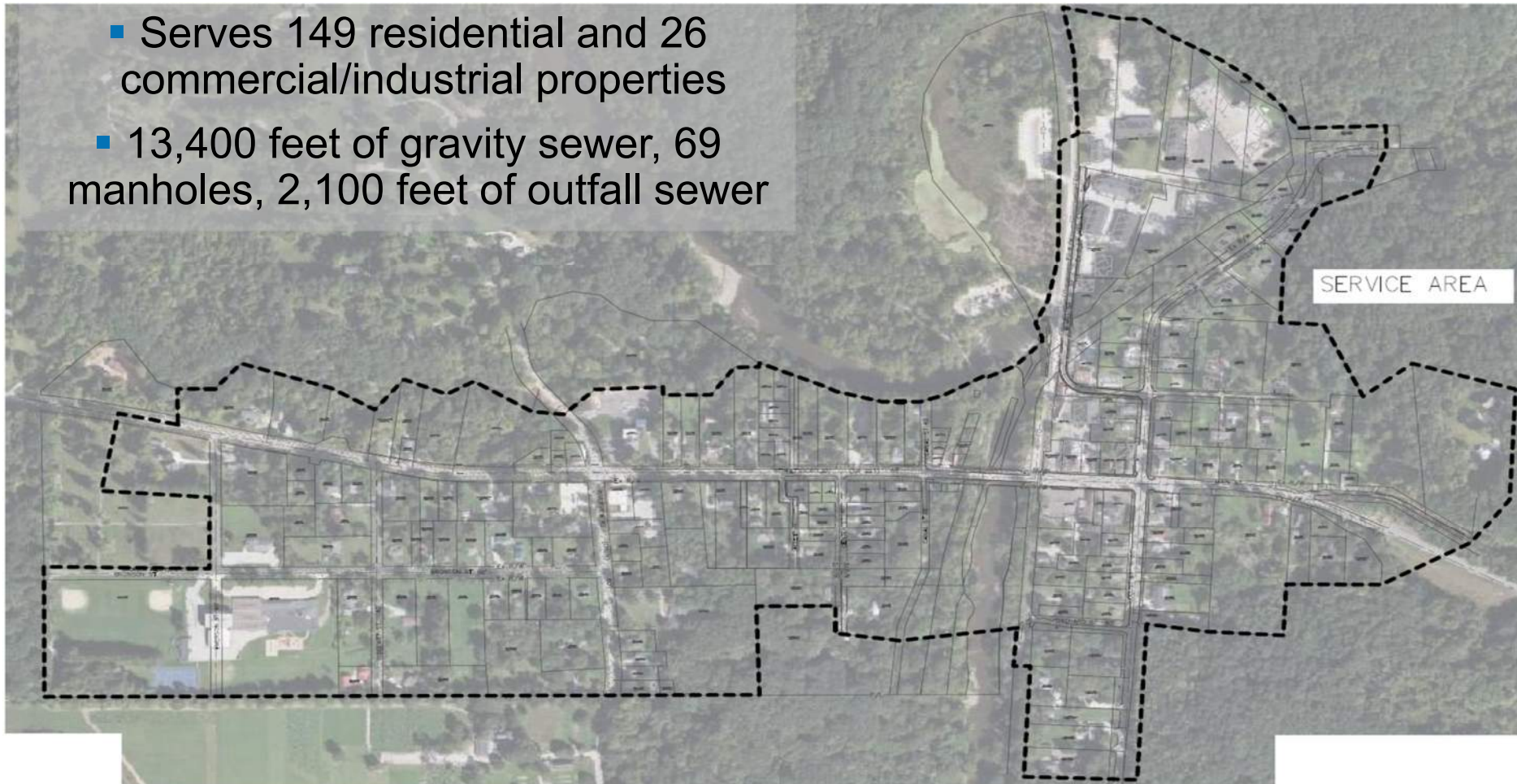


Collection System Overview

BURGESS & NIPLE

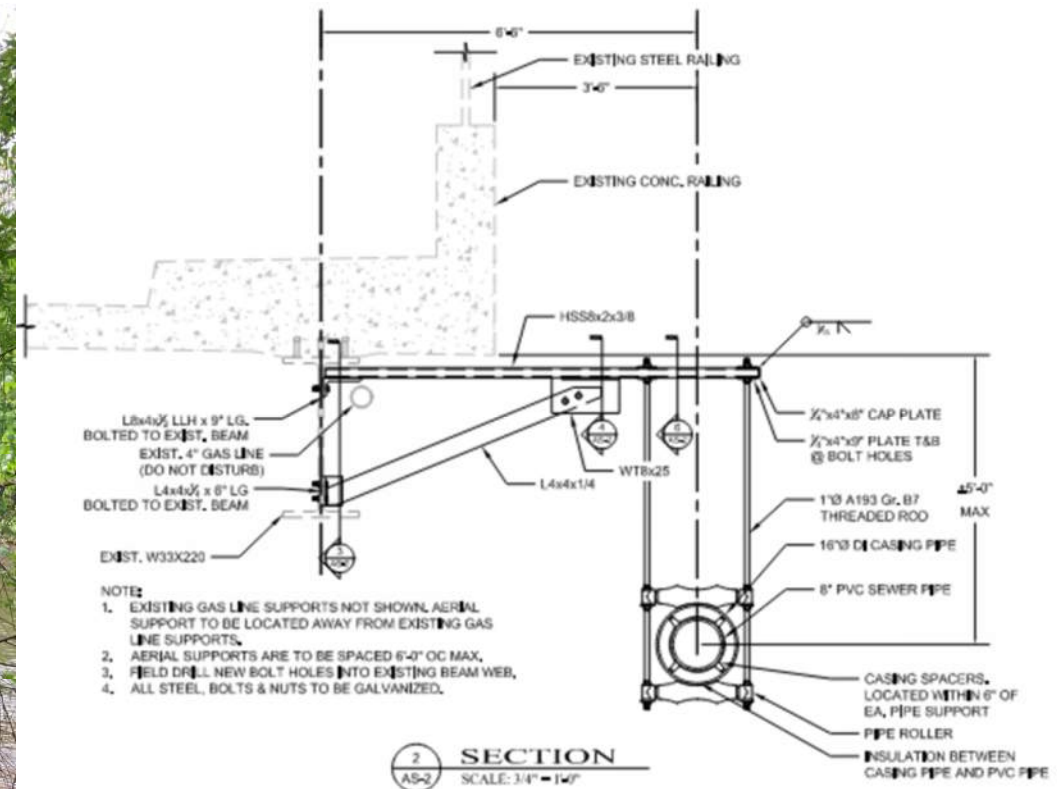


- Serves 149 residential and 26 commercial/industrial properties
- 13,400 feet of gravity sewer, 69 manholes, 2,100 feet of outfall sewer



Aerial Sewer

BURGESS & NIPLE



Treatment Facility Location

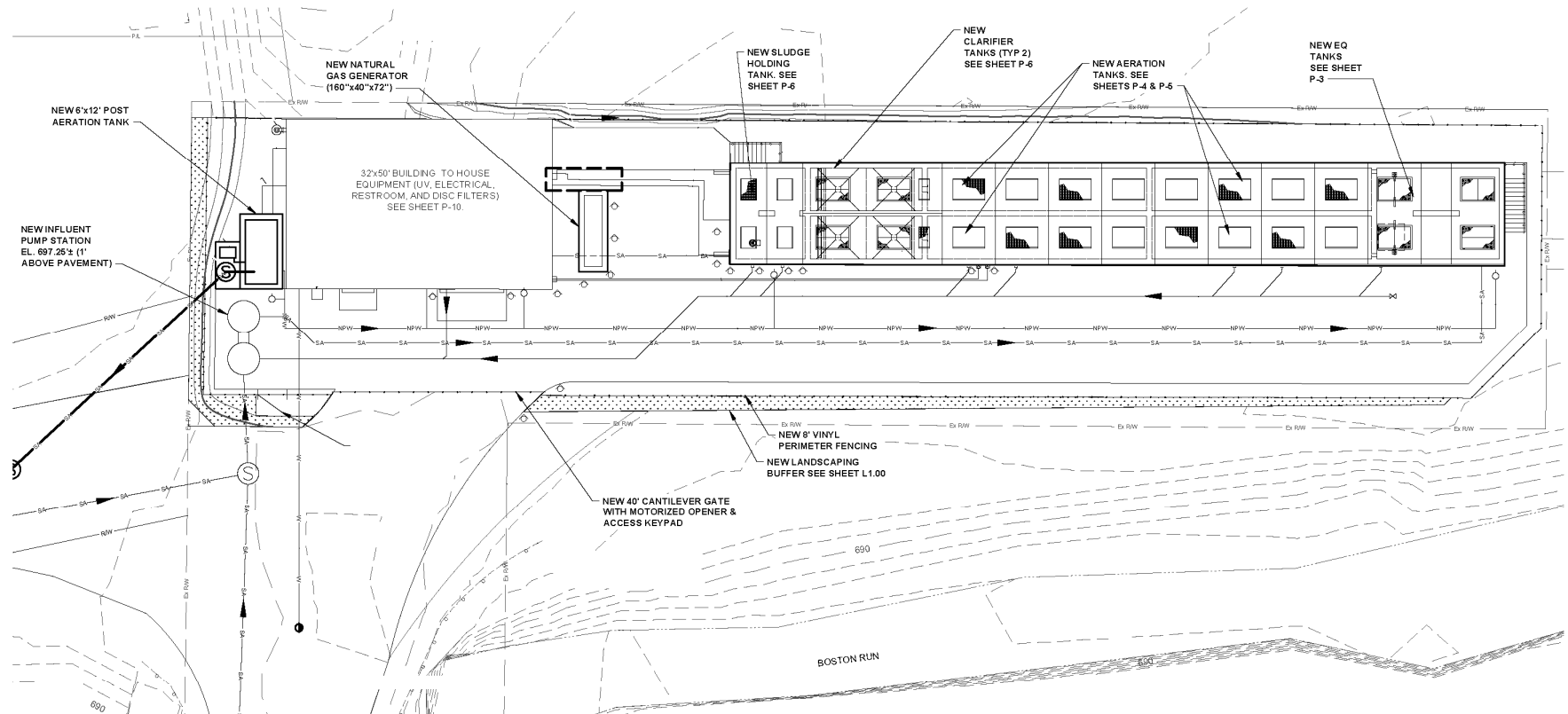


- WRF located within existing 60-ft R/W bounded by NP and Boston Run
- Need to maintain park access
- Outfall location near NP kayak launch

Map – Village of Peninsula Area Master Plan

Treatment System Design

BURGESS & NIPLE



Influent pump station → grinder → EQ basin → aeration tanks → clarifiers → disk filters → UV disinfection → post aeration → river discharge

Funding & Communication

- Sources: H2Ohio, ARPA, Ohio EPA DEFA (WPCLF loan)
- Impact on project timeline and scope

BURGESS & NIPLE



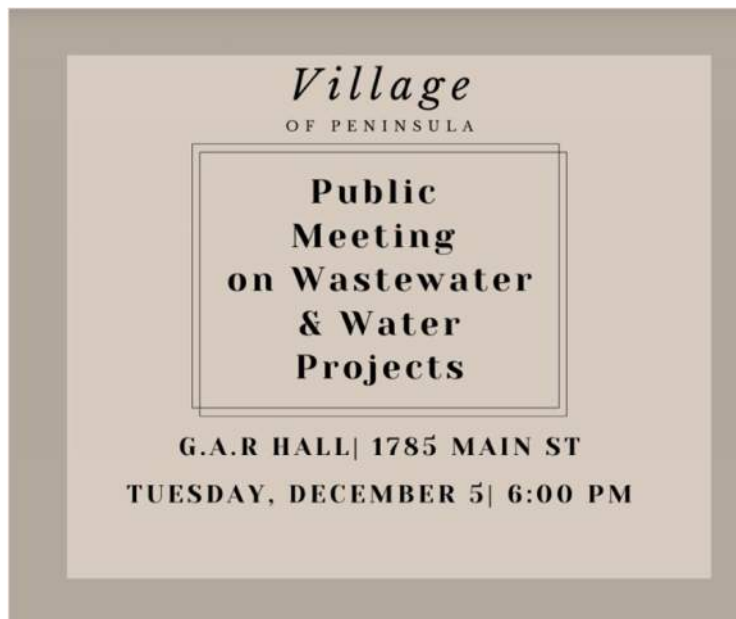
H2Ohio



Transparency Tools



- Dedicated project website
- Public meetings and presentations
- Sharing EPA documents and ordinances



Click on the thumbnail to learn more.



Community Engagement Outcomes

BURGESS & NIPLE



- Feedback loops and public input
- How transparency built trust
- Community response and adaptation



Lessons Learned



**Importance of
Stakeholder
Alignment**



**Managing
Resistance to
Change**



**Navigating
Sensitive
Environments**



Contact Information



Mary Ann Driscoll, PE

Project Manager
Burgess & Niple
330.376.5778 ext. 3417
maryann.driscoll@burgessniple.com



Jacob Morrison, PE

Environmental Engineer II
Summit County DSSS
330.926.2578
jmorrison@summitoh.net



Dave McCallops, PE

Project Manager
Kimley-Horn
216.243.7472
dave.mccallops@kimley-horn.com

BURGESS & NIPLE



Thank You!